

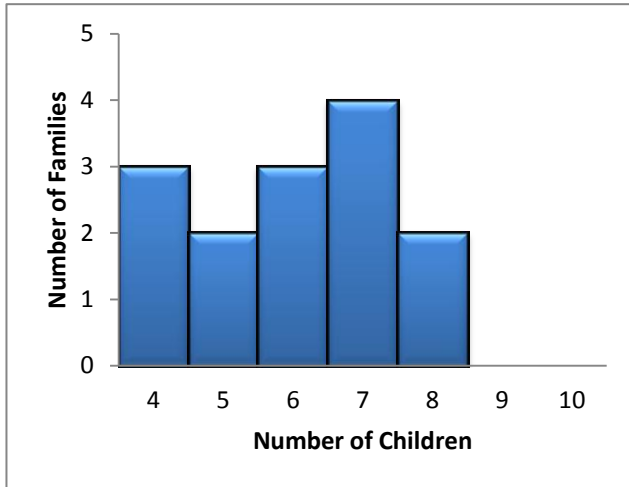
Homework 7-4

Histograms

Unit 7

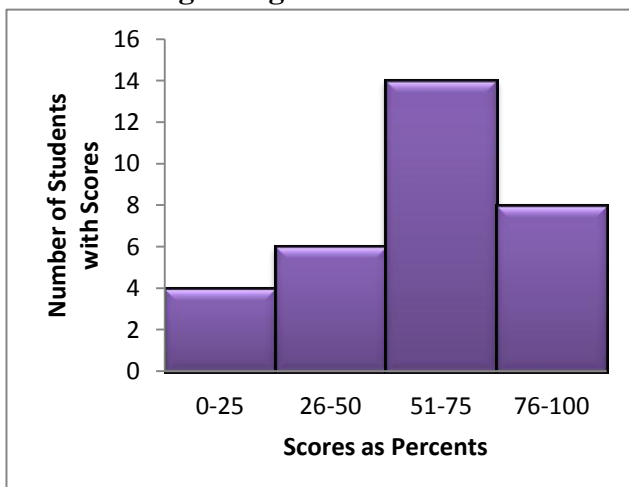
REVIEW.

Mrs. Shirk surveyed 15 people in her B-3 class about how many total people they had in their family. The histogram shows the results of the survey. Use the graph to answer #1-6.



1. How many families had 6 children?
2. How many families had less than 8 children?
3. Calculate the mean number of children for the families surveyed.
4. Calculate the median number of children for the families surveyed.
5. Calculate the mode number of children for the families surveyed.
6. You survey 3 more people. Two of them had 10 children in the family and one had 9 children. Fix the histogram so it reflects this change.

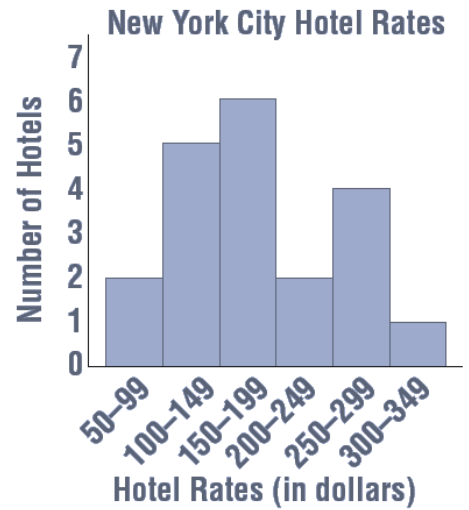
The following histogram shows the number of test scores in a given range. Use it to answer #7-9.



7. How many scores were above 25%?
8. If above 75% is passing, how many passed?
9. Can you calculate an exact class mean from this data? Why or Why not?

Christian found hotels in New York City offering the following rates per night. Use the information to answer questions 10-12.

\$175	\$134	\$119	\$275	\$318
\$155	\$99	\$178	\$202	\$199
\$280	\$160	\$108	\$137	\$151
\$221	\$299	\$97	\$148	\$283



10. Which interval has the most hotels?
11. How many more hotels fall in the \$100-\$149 range than the \$300 - \$349 range?
12. What can you say about the \$50-\$99 range and the \$200-\$249 range?

The following is the weekly allowance 20 students receive. Use the data to answer questions 13-14.

\$5	\$15	\$2	\$10
\$12	\$12	\$10	\$15
\$10	\$5	\$6	\$4
\$8	\$7	\$20	\$7
\$5	\$4	\$5	\$9

13. Make a frequency table for the data.

Interval	Frequency	Relative Frequency
\$0-\$4		
\$5-\$9		
\$10-\$14		
\$15-\$19		
\$20-\$24		

14. Make a histogram for the data.

